

The Maas Gallery

6 Duke Street St James's London SW1Y 6BN
020 7930 9511 | mail@maasgallery.com | maasgallery.com



17503

Sarah Adams, Contemporary b. 1962

Betrothal Arch: North

Oil on linen

150 x 150cm / 59 0 x 59 0in

Information:

A walk to the far end of Watergate Bay in North Cornwall will bring you to a monumental natural arch, and this is my nickname for it. Pass through, and on the left you will find a smooth patch of cliff where someone has carved WILL YOU MARRY ME into the rock. Around it are several pairs of initials.

The Maas Gallery

6 Duke Street St James's London SW1Y 6BN
020 7930 9511 | mail@maasgallery.com | maasgallery.com



17504

Sarah Adams, Contemporary b. 1962

Betrothal Arch: Panorama

Oil on linen

50 x 150cm / 19 5/8 x 59 0in

Information:

Watergate Bay. A vein of quartz links the cave and arch, stained with oxides and harbouring clusters of bright orange sponge. The lower veins run almost horizontally through rock smoothed by constant attrition.

The Maas Gallery

6 Duke Street St James's London SW1Y 6BN
020 7930 9511 | mail@maasgallery.com | maasgallery.com



17505

Sarah Adams, Contemporary b. 1962

Copper Cave

Oil on linen

50 x 150cm / 19 5/8 x 59 0in

Information:

This cave tunnels deep into the cliffs at Watergate Bay, remarkable for an intense blue-green, stained by mineral deposits leaching out of the rock. Often filled with a deep pool, the studies for this painting were made when the sand levels were unusually high, with just a little standing water at the cave mouth.

The Maas Gallery

6 Duke Street St James's London SW1Y 6BN
020 7930 9511 | mail@maasgallery.com | maasgallery.com



17506

Sarah Adams, Contemporary b. 1962

The Carrick Roads from Molunan Cove

Oil on linen

50 x 150cm / 19 5/8 x 59 0in

Information:

An extraordinary shallow cave frames a view from St Anthony's to the Lizard.

The Maas Gallery

6 Duke Street St James's London SW1Y 6BN
020 7930 9511 | mail@maasgallery.com | maasgallery.com



17507

Sarah Adams, Contemporary b. 1962

Mangan Porth

Oil on linen

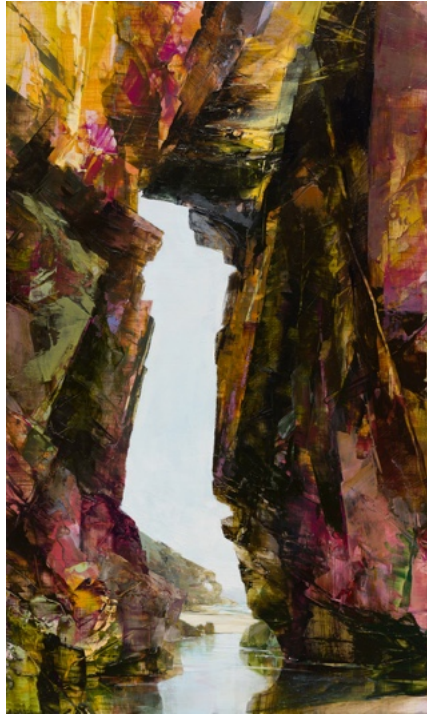
120 x 80cm / 47 1/4 x 31 1/2in

Information:

This forms part of a complex cave system, with a buttress-like arch on the south side of the bay.

The Maas Gallery

6 Duke Street St James's London SW1Y 6BN
020 7930 9511 | mail@maasgallery.com | maasgallery.com



17508

Sarah Adams, Contemporary b. 1962

Perranporth Arch

Oil on board

50 x 30cm / 19 5/8 x 11 3/4in

Information:

There is a wonderful series of stacks and formations at the Southern end of Perranporth Bay, aligned with a further arch at the furthest point. Ancient mine workings are a clue to the colourful, mineral stained rock.

The Maas Gallery

6 Duke Street St James's London SW1Y 6BN
020 7930 9511 | mail@maasgallery.com | maasgallery.com



17509

Sarah Adams, Contemporary b. 1962

Mangan Porth Study

Oil on board

50 x 25cm / 19 5/8 x 9 7/8in

The Maas Gallery

6 Duke Street St James's London SW1Y 6BN
020 7930 9511 | mail@maasgallery.com | maasgallery.com



17510

Sarah Adams, Contemporary b. 1962

Study of Betrothal Arch

Oil on board

50 x 25cm / 19 5/8 x 9 7/8in

The Maas Gallery

6 Duke Street St James's London SW1Y 6BN
020 7930 9511 | mail@maasgallery.com | maasgallery.com



17511

Sarah Adams, Contemporary b. 1962

Swallow's Nest Cave, North Wall Study

Oil on board

50 x 20cm / 19 5/8 x 7 7/8in

The Maas Gallery

6 Duke Street St James's London SW1Y 6BN
020 7930 9511 | mail@maasgallery.com | maasgallery.com



17512

Sarah Adams, Contemporary b. 1962

Swallow's Nest Cave, South Wall Study

Oil on board

50 x 20cm / 19 5/8 x 7 7/8in

Information:

Rarely visited by people, this cave near Padstow Harbour is home to a family of swallows, which were feeding their young while I worked. The view across the Camel Estuary contrasts with the richness of colour at the back of the cave, which starts to glow as your eyes adjust to the darkness.

The Maas Gallery

6 Duke Street St James's London SW1Y 6BN
020 7930 9511 | mail@maasgallery.com | maasgallery.com



17513

Sarah Adams, Contemporary b. 1962

Kynance Cave Study

Oil on board

50 x 20cm / 19 5/8 x 7 7/8in

Information:

The complex of caves and arches at Kynance snake through richly coloured serpentinite.

The Maas Gallery

6 Duke Street St James's London SW1Y 6BN
020 7930 9511 | mail@maasgallery.com | maasgallery.com



17514

Sarah Adams, Contemporary b. 1962

Sunlit Arch

Oil on board

31 x 15cm / 12 1/4 x 5 7/8in

Information:

A favourite subject at the far end of Rocky Beach at Trevone.